



EXHIBITIONS

Ground Floor
EXHIBITION HALLS 1 & 2

1st Floor
EXHIBITION HALLS 3 & 4

Outside Space

Offering the versatility of first-class, fully-equipped exhibition halls alongside acres of outdoor space in an easily accessible location close to the A11 and A14 and just a few miles from Cambridge, Newmarket's Rowley Mile Racecourse provides the perfect place to hold your exhibition.

As well as racedays, the magnificent Millennium Grandstand was designed with exhibitions in mind (not to mention conferences, product launches, business meetings and banquets), so nearly every part of it can be readily utilised to accommodate and enhance your event.

Flexibility is one of the Rowley Mile's greatest features and our events team are experts in helping exhibition organisers to maximise the venue's vast potential, which includes two main exhibition halls and almost unlimited free parking.

As a racing venue Newmarket attracts over 350,000 racegoers per year. We are happy to help promote your event to our racegoers through racecard advertisements, posters and flyers distributed around the racecourse, not to mention information on our website and email newsletters to our database of over 170,000 contacts.

For some 350 years, the greatest thoroughbred talent has been exhibited in countless races on the world famous Rowley Mile turf. Now it's an ideal place for companies to stage their own exhibitions, right at the heart of the East of England in a location with a dramatic sense of sporting history which adds grandeur to any event held here.

EXHIBITIONS

EXHIBITION
HALL 1 HALL 2

Capacities

Theatre	N/A	120
Classroom	N/A	50
Boardroom	N/A	46
U-Shape	N/A	38
Cabaret	N/A	80
Dining	500	100
Reception	500	200

Dimension (m)

Length	29.5	29.7
Width	29.8	11.35
Useable Area (m ²)	685.65	337.10
Height Max	3.6	3.6
Height Min	2.0	2.0

Technical Information

Lighting Type	FL	FL
Lighting Controls in Room	No	No
Dimmers	No	No
Blackout	No	Yes
Natural Daylight	Yes	Yes
Sound System	Yes	Yes
3 Phase	Yes	Yes
No. of 13A sockets	24	7
Wi-Fi	Yes	Yes

Access

Door Height	2.3	2.3
Door Width	2.15	1.8

Miscellaneous

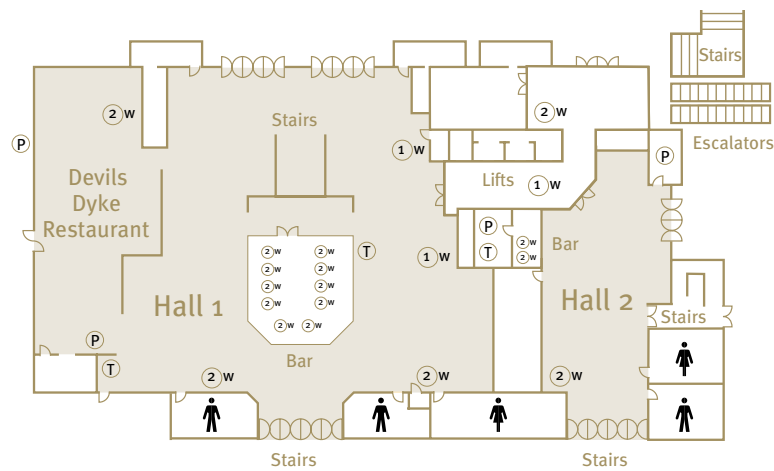
Telephone Points	Yes	Yes
Air Conditioning	Yes	Yes

EXHIBITION HALL 1 – Ground Floor, Millennium Grandstand

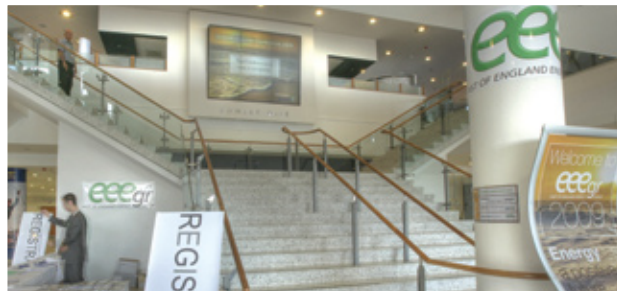
685 square metres of marble floored exhibition space with vehicular access for cars or other large display items. The Devils Dyke is a fully removable 100 seater self-service restaurant located alongside the main exhibition area. Hall 1 adjoins Hall 2 through the lift lobby. A sweeping central staircase leads from Hall 1 to Hall 3 on the first floor.

EXHIBITION HALL 2 – Ground Floor, Millennium Grandstand

Over 300 square metres of fully carpeted space which works equally well as trade space for exhibitions, reception room or registration area.



Racecourse



①w = 1 wall socket ②w = 2 wall sockets ②f = 2 floor sockets
 P = 3 phase T = telephone point F = fluorescent T = tungsten

EXHIBITIONS

EXHIBITION
HALL 3 HALL 4

Capacities

Theatre	150	N/A
Classroom	N/A	N/A
Boardroom	N/A	N/A
U-Shape	N/A	N/A
Dining	N/A	N/A
Reception	500	50

Dimension (m)

Length	27.65	10.0
Width	25.4	15.0
Useable Area (m ²)	490	128
Height Max	3.15	3.15
Height Min	3.15	3.15

Technical Information

Lighting Type	FL	FL
Lighting Controls in Room	No	No
Dimmers	No	No
Blackout	No	No
Natural Daylight	Yes	Yes
Sound System	Yes	Yes
3 Phase	Yes	Yes
No. of 13A sockets	23	10
Wi-Fi	Yes	Yes

Access

Door Height	2.3	2.8
Door Width	1.8	1.8

Miscellaneous

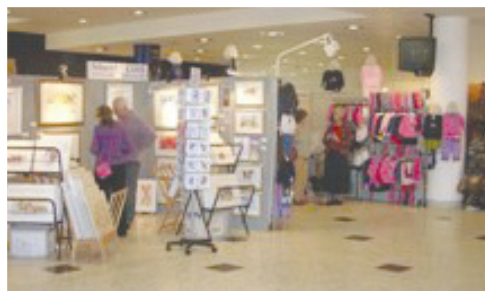
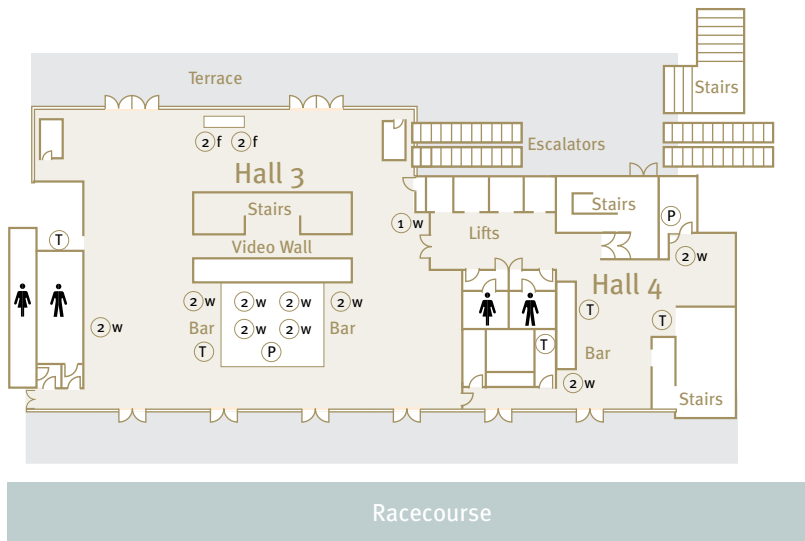
Telephone Points	Yes	Yes
Air Conditioning	Yes	Yes

EXHIBITION HALL 3 – First Floor, Millennium Grandstand

This dual aspect carpeted area is light and airy with a sweeping central staircase and open air balcony overlooking the Parade Ring. A nine screen video wall and two large plasma screens are available for use by exhibitors for advertisements or for conference organisers to display welcome messages and delegate information.

EXHIBITION HALL 4 – First Floor, Millennium Grandstand

Hall 4 is a carpeted lounge area and is ideal for exhibitors' stands or to be used as a drinks reception or refreshment area.



①w = 1 wall socket ②w = 2 wall sockets ①f = 2 floor sockets
Ⓟ = 3 phase Ⓣ = telephone point Ⓛ = fluorescent Ⓣ = tungsten

EXHIBITIONS

OUTSIDE SPACE

With acres of space both indoors and out, The Rowley Mile Conference Centre is a flexible and inspiring venue for many different types of events, with the space to accommodate cars and whole companies, we are sure to have something to suit your needs.

We have previously held Car Exhibitions, Fun Runs, Dog Shows and even had a 'Zip Slide' from the top of the Millennium Grandstand. We can also cater for team building activities and events. Just a few examples of what we can provide are: It's A Knockout, Skool Sports, Newmarket Racecourses Treasure Hunt, Outdoor Fun Days and Spy Games.

The Hyperion Lawn located at the rear of the Millennium Grandstand can also be used as a space to exhibit.



"After viewing Newmarket Racecourses as a potential new venue for our wedding show, it was obvious that the quality and standard of service was far beyond what we had previously experienced. The grandstand is the perfect building for any exhibition and has so much flexibility on the set-up of the overall show. The conference managers assisted in every way possible to make our time with them as easy as possible. The change of venue has not only allowed us to expand our event, but also cut down our set-up and breakdown times down by around two thirds."

Kate Page, Newmarket Wedding Show

