



CONFERENCES & MEETINGS

MILLENNIUM GRANDSTAND

Millennium Suite
Limekilns Room
Champions Gallery
Millennium Boxes

HEAD-ON STAND

The Bistro
The Sponsors Lounge
The Royal Box

Newmarket's Rowley Mile Racecourse, where champions of the turf have staked their claim to immortality over the last 350 years, is an inspirational venue where victory means everything.

It follows, therefore, that when business clients use Rowley Mile's outstanding conference and meeting facilities, all we want is for their event to be a clear-cut winner in every respect.

We pride ourselves on the quality of our service and our highly experienced, dedicated team will help you to maximise the full potential of our facilities and ensure that everything runs smoothly in advance and on the day itself.

We can accommodate everything from a small meeting for a handful of people to a conference for 300 delegates in one location with an additional 20 syndicate and breakout rooms. Together these fully-equipped, comfortable and striking facilities provide the flexibility to meet the full diversity of your requirements.

Our location in the heart of the East of England and just a few miles from Cambridge benefits from swift and easy access thanks to its proximity to the A11 and A14.

And it is a location which lends so much to any event taking place here, imbuing it with a very special sense of occasion thanks to its unique racecourse environment and its inextricable links to sporting excellence and royal history.



MILLENNIUM SUITE



CHAMPIONS GALLERY



LIMEKILNS ROOM



CONFERENCES & MEETINGS

Capacities	MILLENNIUM SUITE	ROOM	BAR
Theatre	300	150	120
Classroom	80	40	40
Boardroom	40	40	24
U-Shape	32	32	20
Dining	250	100	100
Reception	400	250	175
Dinner Dance	230	50	N/A
Cabaret-style*	200	80	N/A

Dimensions (m)	MILLENNIUM SUITE	ROOM	BAR
Length	27.42	15.55	23.6
Width	13.80	13.80	23
Useable Area (m ²)	378.4	214.59	25
Height Max	2.7	2.7	25
Height Min	2.5	2.5	25

Technical Information	MILLENNIUM SUITE	ROOM	BAR
Lighting Type	FL	FL	FL
Lighting Controls in Room	Yes	Yes	Yes
Blackout	Yes	Yes	Yes
Natural Daylight	Yes	Yes	Yes
Sound System	Yes	Yes	Yes
3 Phase	Yes	Yes	Yes
No. of 13A sockets	34	12	22
Wi-Fi	Yes	Yes	Yes

Access	MILLENNIUM SUITE	ROOM	BAR
Door Height	2.15	2.15	2.15
Door Width	1.4	1.4	1.4

Miscellaneous	MILLENNIUM SUITE	ROOM	BAR
Telephone Points	Yes	Yes	Yes
Air Conditioning	Yes	Yes	Yes

* Based on 8 per table.

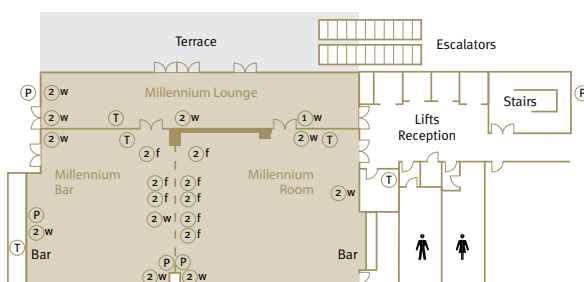
MILLENNIUM SUITE – Second Floor, Millennium Grandstand

Our principal function room, the impressive Millennium Suite, which lies on the second floor of the Millennium Grandstand and enjoys inspiring views of the world's most historic racecourse, can readily accommodate up to 300 people theatre-style or 200 cabaret-style.

This highly versatile facility can also be split using a soundproof partition to create two smaller rooms (the Millennium Room and the Millennium Bar), allowing clients to have a separate meeting area or breakout/catering facility.

Full blackout is available in the suite and there are two large bars for drinks receptions and dinners. An adjoining lounge, ideal for serving lunch or refreshments and with an open air terrace overlooking the Parade Ring and Winners' Enclosure, completes the main facilities on this floor.

Staging, lighting and a complete range of audio visual equipment can be installed to your specification. The services of a professional technician are also available.



MILLENNIUM SUITE



1w = 1 wall socket 2w = 2 wall sockets 2f = 2 floor sockets
P = 3 phase T = telephone point FL = fluorescent TL = tungsten



CONFERENCES & MEETINGS

	LIMEKILNS ROOM	MILLENNIUM BOXES	
		Large	Small
Capacities			
Theatre	60	30	20
Classroom	20	16	10
Boardroom	30	22	10
U-Shape	26	18	10
Dining	50	40	20
Reception	80	30	20
Cabaret-style*	32	24	12

Dimensions (m)			
Length	19.75	5.75	5.75
Width	5.8	7.8	3.85
Useable Area (m ²)	114	44.85	22.14
Height Max	3.0	2.7	2.7
Height Min	3.0	2.7	2.7

Technical Information			
Lighting Type	FL	FL	FL
Lighting Controls in Room	Yes	Yes	Yes
Blackout	Yes	Yes	Yes
Natural Daylight	Yes	Yes	Yes
No. of 13A sockets	6	42	
Internet access	Yes	Yes	Yes

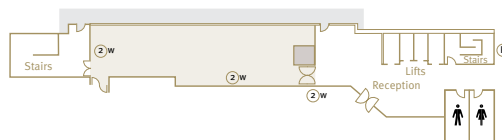
Access			
Door Height	2.15	2.05	2.05
Door Width	1.4	0.8	0.8

Miscellaneous			
Telephone Points	No	Yes	Yes
Air Conditioning	Yes	Yes	Yes

* Based on 8 per table.

LIMEKILNS ROOM – Third Floor, Millennium Grandstand

The Limekilns Room is a stylish multi-purpose room for up to 60 people with fabulous views over the Parade Ring and the training gallops beyond. It is ideal for mid-size meetings or as a larger breakout room.



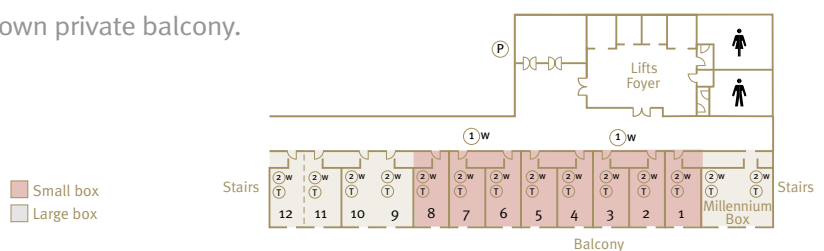
CHAMPIONS GALLERY – Third Floor, Millennium Grandstand

The stunning Champions Gallery, which on racedays is a panoramic restaurant with spectacular views of the track and training gallops beyond, also works well as a large breakout room for 50 theatre style and can equally be used as a drinks reception or catering area. Ideal for events that need tiered seating, the Champions Gallery is also a great venue for speed networking and other similar types of events.



MILLENNIUM BOXES – Fourth Floor, Millennium Grandstand

The magnificent Millennium Boxes provide a luxurious setting for small meetings, training events, interviews, private and corporate entertaining and also serve as excellent breakout rooms when used as part of larger conferences. The larger boxes can accommodate up to 30 people theatre-style and the smaller ones up to 20. All the boxes enjoy sensational views of the course from their own private balcony.



①w = 1 wall socket ②w = 2 wall sockets ③w = 2 floor sockets
 Ⓟ = 3phase Ⓡ = telephone point Ⓛ = fluorescent Ⓣ = tungsten



CONFERENCES & MEETINGS

	THE SPONSORS BISTRO LOUNGE	THE ROYAL BOX	
Capacities			
Theatre	70	80	40
Classroom	40	40	24
Boardroom	30	30	20
U-Shape	26	26	16
Dining	70	80	32
Reception	100	100	50
Cabaret-style*	56*	56*	24

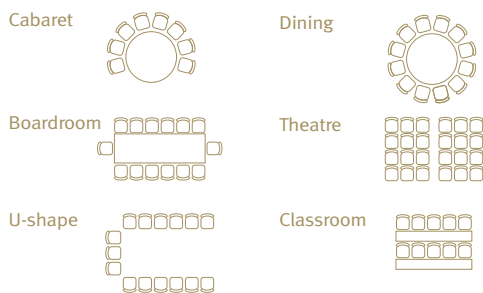
Dimensions (m)			
Length	14.3	12.0	7.6
Width	13.9	8.8	7.3
Useable Area (m ²)	198.77	105	55.48
Height Max	3.0	3.15	3.8
Height Min	2.5	3.0	3.8

Technical Information			
Lighting Type	FL	FL	Bulbs
Lighting Controls in Room	Yes	Yes	Yes
Dimmers	No	No	No
Blackout	No	No	No
Natural Daylight	Yes	Yes	Yes
Sound System	No	Yes	No
3 Phase	No	No	No
No. of 13A sockets	29	8	4
Internet access	Yes	Yes	Yes

Access			
Door Height	2.0	1.95	2.0
Door Width	1.55	0.9	0.7

Miscellaneous			
Telephone Points	Yes	Yes	Yes
Air Conditioning	Yes	Yes	Yes

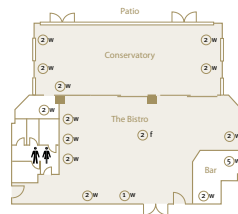
* Based on 8 per table.



①w = 1 wall socket ②w = 2 wall sockets ③f = 2 floor sockets
 Ⓟ = 3phase Ⓣ = telephone point Ⓛ = fluorescent Ⓛ = tungsten

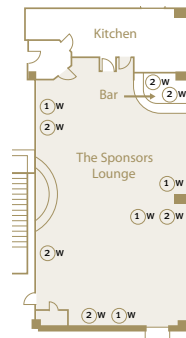
THE BISTRO – Ground Floor, Head-On Stand

The Bistro is an excellent facility for a variety of different events. Light, airy and welcoming, it is adjoined by a large conservatory, separated by Japanese-style screens, adjacent to where the horses go out on to the track. It can accommodate up to 70 people theatre-style and provides self-contained facilities with its own kitchen, bar and toilet facilities.



SPONSORS LOUNGE – First Floor, Head-On Stand

A comfortable and stylish conference room, providing flexible accommodation which can seat up to 80 delegates theatre-style.



THE ROYAL BOX – First Floor, Head-On Stand

The Royal Box is a spectacular facility with exceptional racecourse views. As its name suggests, this is an elegant room full of historical racing art and enjoys its own private enclosed viewing terrace, private lift and toilet facilities. The Royal Box is a perfect environment for a small board meeting or private dining.

